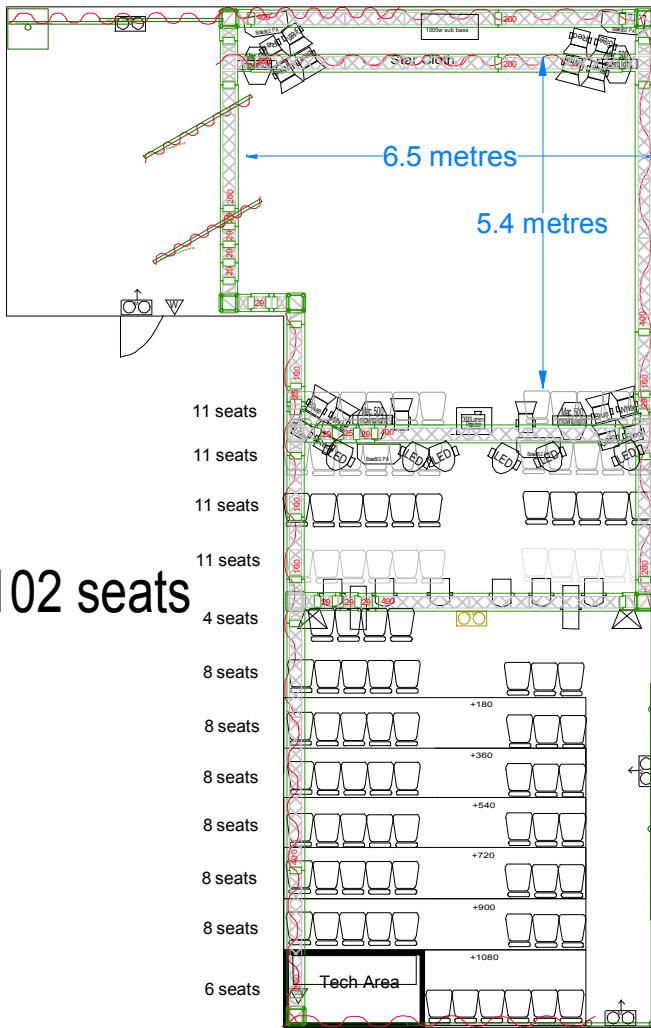


# Spotlites International Theatre



102 seats

Memory Lighting Desk  
 30 channels of DMX Dimming  
 3000 Lumen Projector  
 VGA cable runs to Tech Area  
 4x Moving Lights in Rig  
 General focus Lighting Rig

Full colour mixing through 16 RGBW fixtures  
 2 x 500w fresnels you can refocus  
 2 x 1000w profiles you can refocus  
 6 x par56 rgb LEDs

40 Channel Digital Sound Desk with recall  
 20 way sound snake to on stage  
 CD Player

Microphone wired (SM58) on a stand

Sound cables for laptop / Ipad  
 Stereo Speaker Sound System

1000watts of Sub bass

Additional Vocal Cluster Sound System

- 150w House Light
- Maintained Emergency Light
- Non-Maintained Emergency Light

Black Drapes

21 1/4 (533.4mm)  
 17" (431.8mm)

- Fire Extinguisher - CO2
- Fire notice - General Notice
- Fire Extinguisher - Water

PA Speaker

1000w sub bass

3000 Lumen Projector

Moving Light (Mac 500)

4 x 1000w Fresnels  
 in Red, Green, Blue, White

500w Fresnel

1000w Profile

Par 56 RGB LED

1000w Par 64 (with L228 Frosting)

<b>Spotlites</b>
Royal Society of Edinburgh
22-26 George Street
Edinburgh
EH2 2PQ
International Theatre Ground Plan
Showing: Rostra, Seats, Emergency Lighting, Dimensions, Scaffolding Theatre Lighting, Black Curtains
Venue Managed by
Spotlites. 338 High Street, Chatham. Kent. ME4 4NR
01634 829468 / 07956 369291
Drawing Date: 4th March 2016
Contact: Colin King
Scale 1:100 (on A3)